

PROCEDURES TO OBTAIN RESIDENTIAL LAWN IRRIGATION SERVICE

January 2009

1. **Apply for a water tap (lawn irrigation service).** Hoke County Utilities should be contacted first to determine if the existing water tap can be split or if a new tap needs to be made. Split taps can only be made if the existing service lateral is 1" pipe or larger and is not in a paved driveway, walkway or other areas deemed unsuitable by Hoke County Utilities. If a split tap cannot be made, a new lateral will need to be installed. As construction costs vary based on installation requirements, please contact the Hoke County Utilities Department at 910-875-6704 for current pricing. A packet containing information about backflow prevention assemblies and requirements is available. The customer can make application for the water service at Hoke County Utilities Customer Service office located at 423 E. Central Avenue in Raeford. After applying for the water service, the receipt for application may be taken to the Hoke County Inspections Department to obtain the required plumbing permit.
2. **An approved Reduced Pressure Principle Assembly shall be required to protect all lawn irrigation services.** Hoke County Utilities will provide an information packet of approved backflow assemblies, detailed installation specifications and a list of companies who employ certified backflow prevention testers. **The cost, installation, testing and repairs of the backflow prevention assembly are the responsibility of the customer.** Hoke County Utilities will be responsible for conducting bi-annual re-testing of residential backflow prevention assemblies. Any repairs that are deemed necessary will be outlined in writing. At the customer's expense, a certified tester must perform all repairs and subsequent retesting.
3. **Obtain a Plumbing Permit.** According to the North Carolina Plumbing code, you must be a certified plumber or a licensed contractor to get a plumbing permit; however, residential customers who install their own backflow prevention assembly and (if applicable) irrigation system, shall be responsible for obtaining the permit. All work completed by an individual must be done in accordance with code and shall be inspected. The plumbing permit will be processed by the Hoke County Inspections Department and they can be contacted at 910-875-8407.
4. **Purchase and install a Backflow Prevention Assembly.** While the customer is waiting on the Hoke County Utilities to make the irrigation tap, the backflow prevention assembly can be purchased and installed. The customer has the option of installing the backflow prevention assembly before or waiting until the tap has been made. It is advised to wait until after Hoke County Utilities makes the tap.
5. **Hoke County Utilities makes the water tap.** Normally within 30 days after the tap order has been processed. Hoke County Utilities will install the service. If possible, the new irrigation meter box will be installed adjacent to your existing domestic meter box. ***Note: WATER METER IS NOT INSTALLED AT THIS TIME.***
6. **Have the installation of the backflow prevention assembly inspected.** The customer or plumber will need to notify the Hoke County Inspections Department (the office where the plumbing permit was obtained) that the backflow prevention assembly has been installed and schedule a time for the inspection to be done. When the inspection has been satisfactorily completed, the inspector will notify the Utilities Department and the meter will be set.
7. **Hoke County Utilities installs the water meter and turns the service on.**

8. **Have the backflow prevention assembly tested (Certification Test).** The Hoke County Cross Connection Ordinance (Section 6) Installation of Assemblies, states that the installation, all backflow prevention assemblies are required to be tested with ten (10) days. A certified backflow prevention assembly tester approved by the Hoke County Utilities shall perform the certification test. A list of companies who employ certified testers is included in your information packet. A customer who fails to have an assembly tested within the time prescribed above, shall be considered in violation of the Hoke County Cross Connection Control Ordinance (section 11 Enforcement) and may be issued a civil citation by Hoke County.

Hoke County Utilities Department
423 E. Central Ave.
PO Box 1500
Raeford, NC 28376
Telephone: (910) 875-6704
Fax: (910) 904-1640

NOTICE OF APPROVED BACKFLOW PREVENTION ASSEMBLIES

Enclosed is the list of backflow prevention assemblies approved by Hoke County Utilities for protection to its public water supply.

The following should be considered before selecting a particular assembly.

1. All local plumbing laws and regulations must be adhered to.
2. All backflow prevention assemblies shall be installed in accordance with specifications furnished by the Hoke County Utilities and the Manufacturer's installation instructions (Hoke County Utilities installation instructions supersede the Manufacturer's instructions, due to local requirements).
3. Reduced pressure principle assemblies must be installed in a horizontal position and in a location in which no portion of the assembly can become submerged under any circumstances (pit/below grade installations are prohibited).
4. The operation and performance of these assemblies may vary among manufacturers because of local pressure conditions.
5. Hoke County reserves the right to or remove from the approved list any Reduced Pressure Backflow Prevention Assembly, Double Check Valve Assembly or Pressure Vacuum Breaker Backflow Preventer.
6. It is a requirement that backflow prevention assemblies be tested immediately after installation and at least once per year thereafter by a person approved by Hoke County. A copy of the test results must be sent to Hoke County Utilities Office immediately after testing (within 10 days), Any time that repairs to backflow prevention assemblies are deemed necessary, whether through initial or annual testing or routine inspection by the owner or by Hoke County, these repairs must be completed within a specified time in accordance with the degree of hazard. In no case shall this time period exceed thirty (30) days.
7. Personnel of the Hoke County Utilities Department will conduct testing of backflow prevention assemblies on a random basis to ensure that the assemblies are operating properly. The owner will be given adequate advance notification prior to the test.
8. By-pass piping is not permitted unless the by-pass piping is equipped with an approved backflow prevention assembly of the same type and brand as the main line assembly. In many instances it will be necessary to install two approved backflow prevention assemblies in order that the water service will not be interrupted during testing/repair of the assembly.
9. When cross-connections are found to exist, the owner, his agent, occupant, or tenant will be notified to disconnect the same within the time limit established by Hoke County. Degree of protection required and maximum time allowed for compliance will be based upon the potential degree of hazard to the public water system. The maximum time limits are as follows:
 - A. Cross-connections with private wells or other unapproved source of water- Immediate disconnection of unapproved source.
 - B. Cross-connections requiring correction through 1.) Elimination 2.) Air gap separation 3.) Reduced pressure zone backflow prevention assembly, double check valve assembly, or pressure vacuum breaker for sizes ¾" through 2"- up to thirty (30) days.
 - C. Cross-connections requiring correction through reduced pressure zone backflow prevention assembly or double check valve assembly for sizes 2 ½" and larger- up to sixty (60) days.

LIST OF APPROVED BACKFLOW PREVENTION ASSEMBLIES

Note: All assemblies for use in the Hoke County water system must have prior approval by foundation for Cross-connection Control and Hydraulic Research, University of Southern California.

Backflow Prevention Assemblies two (2) inches and smaller shall have one quarter (1/4) turn, full port, resilient seated bronze ball valve shut off. Assemblies two and one half (2 ½) inches and larger shall have resilient wedge shut-off valves: the backflow preventer and resilient wedge shut-off valves must be fuse bonded epoxy coated.

All assemblies are listed in alphabetical order. There is no implication of preference of assemblies.

APPROVED LIST FOR POTABLE WATER SERVICE AND LAWN IRRIGATION SYSTEMS ONLY

REDUCED PRESSURE PRINCIPLE ASSEMBLIES

Ames Company, Inc.

Model 4000 B- ½", ¾", 1", 1 ½", 2"
Model 4000 RP- 4", 6", 8", 10"
Model 4000 SS- 2 ½", 3", 4", 6"
Model C400 Series- 2 ½", 3", 4"
Model M400 Series- 2 ½", 3"

Febco Sales Inc.

Model 825 Y- ¾", 1", 1 ¼", 1 ½", 2"
Model 825 YA- ¾", 1", 1 ½", 2"
Model 825 YD- 2 ½", 3", 4", 6", 8", 10"
Model 860- ½", ¾", 1", 1 ¼", 1 ½", 2"
Model 860 RP- 2 ½", 3", 4", 6", 8", 10"
Model 880/880V- 2 ½", 3", 4", 6", 8", 10"

Cla-Val

Model RP6LW- ¾", 1", 1 ¼", 1 ½", 2"
Model RP6VW- ¾", 1", 1 ½", 2"
Model RP7LW/RP7LY- 2 ½", 3", 4", 6", 8", 10"
Model RP8NW/RP8NY- 2 ½", 3", 4", 6", 8", 10"
Model RP8VW/RP8VY- 2 ½", 3", 4", 6", 8", 10"

Watts Regulator Company

Model 009 QT- ¾", 1", 1 ½", 2", 2 ½", 3", 4", 6"
Model 909 QT- ¾", 1", 1 ¼", 1 ½", 2"
Model 909 Series- 2 ½", 3", 4", 6", 8", 10"
Model 994 Series- 2 ½", 3", 4", 6"
Model 957 Series- 2 ½", 3", 4"

Conbraco Industries Inc.

Model 40200 Series- ¼", 3/8", ½", ¾", 1", 1 ¼",
1 ½", 2", 2 ½", 3", 4", 6",
8", 10"

Wilkins Regulator Company

Model 975XLT- ¾", 1", 1 ¼", 1 ½", 2"
Model 975- 2 ½", 3", 4", 6", 8", 10"
Model 375- 2 ½", 3", 4", 6"
Model 475- 4", 6"

BACKFLOW PREVENTION ASSEMBLY SUPPLIERS

Listed below are local suppliers who offer the different brands of backflow prevention assemblies that are on the current Hoke County Utilities approval list. **HOKE COUNTY UTILITIES DOES NOT ENDORSE OR RECOMMEND SUPPLIERS.** This is only for your information as a customer service to you.

1. Noland Company
125 Drake Street
(910) 483-0341
2. Longley Supply Company
230 Robeson Street
(910) 323-0470
3. Hubbard Pipe & Supply, Inc.
463 Robeson Street
(910) 484-0187
4. Mechanical & Maintenance Supply
416 Robeson Street
(910) 323-2424
5. Ferguson Enterprises Inc.
714 Winslow Street
(910) 484-5181
6. Hughes Supply Inc.
3704 Clinton Road
(910) 484-1102
7. Water Works Supply of NC
902 Eastern Blvd.
(910) 485-2221

HOKE COUNTY UTILITIES

CERTIFIED BACKFLOW PREVENTION ASSEMBLY TESTERS (RESIDENTIAL)

May 3, 2016

The following is a list of companies who employ certified backflow prevention assembly testers approved to test and repair all types of backflow prevention assemblies installed in the Hoke County Water System. Please solicit for best price. All companies are listed in alphabetical order. There is no implication of preference of companies.

TESTING COMPANY	PHONE NUMBER
A & K Services	(910) 323-9421
ABC Plumbing	(910) 323-4060
Abco Backflow Co.	(910) 309-7758
Allen's Green Biz Nursery	(910) 323-8811
Billy's Plumbing Service	(910) 485-5175
Blackwell Landscaping	(910) 424-4272
Budget Rooter	(910) 960-2564
C & C Irrigation & Lighting	(910) 980-1535
Camco Enterprises	(919) 499-2211
Cardinal Landscaping	(910) 822-6439
Coffman Plumbing	(910) 424-4060
Courtney Baker Plumbing	(910) 426-3994
Daniel's Plumbing Company	(910) 423-7444
David Long Plumbing	(910) 624-6774
Evergreen Lawn Care	(910) 822-2824
Fix-it Plumbing	(919) 776-7870
Foster Plumbing Company	(910) 424-2585
Haire Plumbing Company	(910) 483-1421
Ivey Mechanical	(910) 483-2000
Jackie Melvin	(910) 483-2069
McBride Plumbing	(919) 730-1389
Mckenzie Supply Co	(910) 276-1691
Mobley Enterprises Inc.	(910) 483-0643
Roto-Rooter	(910) 488-6229
Timmy's Backflow Testing	(910) 425-4725
Town & Country Plumbing	(910) 483-4783
V.C. Blake	(910) 483-6591
Waco Plumbing	(919) 772-1745
Wade Hardin Plumbing Company	(910) 486-0334

REQUIREMENTS FOR ABOVE GROUND INSTALLATIONS OF REDUCED PRESSURE PRINCIPLE AND DOUBLE CHECK VALVE ASSEMBLIES

1. The backflow preventer must be installed a minimum distance of five (5) feet from the meter service. Installations of backflow preventers within the utility right of way will **NOT** be approved. All backflow prevention assemblies must be installed with accessibility. Backflow prevention assemblies that are installed under homes, floors, or in crawl spaces will not be approved.
2. Reduced pressure principle assemblies must be installed in a horizontal position and in a location in which no portion of the assembly can become submerged under any circumstances.
3. Double check valve assemblies may be installed in a vertical position provided the flow of water is in an upward direction.
4. Reduce pressure principle assemblies must be installed above ground. Double check valve assemblies, 2 ½" and above must be installed above ground.
5. Backflow prevention assemblies installed inside must be a minimum distance of twelve (12) inches above the floor and no higher than four (4) feet above the floor, with adequate clearance around the backflow preventer for testing and/or repair of the backflow prevention assembly. Reduce pressure principle assemblies with side mounted relief valves, must have a minimum 16" clearance from surrounding walls. Wherever a reduced pressure backflow preventer is installed inside a building, an air gap drain line large enough to carry off the discharge of water from the relief valve shall be installed.
6. Backflow prevention assemblies installed outside, above ground, must be protected from freezing. The backflow prevention device assembly must be installed a minimum distance of twelve (12) inches above the ground, and no higher than four (4) feet above ground. Landscaping is allowed around the backflow preventer, but must not interfere with the required annual testing, and/or repair of the backflow prevention assembly.
7. Backflow prevention assemblies two and one half (2 ½") inches and larger must be supported to allow for the weight of the backflow prevention assembly. Support construction can be cinder block, brick, or steel. Supports must have a proper footing four (4") inches of concrete for supports to rest upon. Backflow prevention assembly supports must not interfere with the valves, test cocks, testing, and/or repair of the backflow assembly.
8. All piping 2 ½" and larger must be of ductile iron, cast iron or steel.
9. In order to prevent obstruction during the testing and/or repair of the assembly, additional piping and/or valves shall not be located within and/or under the installation enclosure.
10. All backflow prevention assembly installations shall be inspected and approved by the Hoke County Inspections Department prior to initiation of water service by Hoke County Utilities Department.

ABOVE GROUND ENCLOSURES

Listed below are manufacturers that offer the different brands of above ground enclosures that are approved by Hoke County. HOKE COUNTY UTILITIES DOES NOT ENDORSE OR RECOMMEND manufacturers. This is only for your information as a customer service to you.

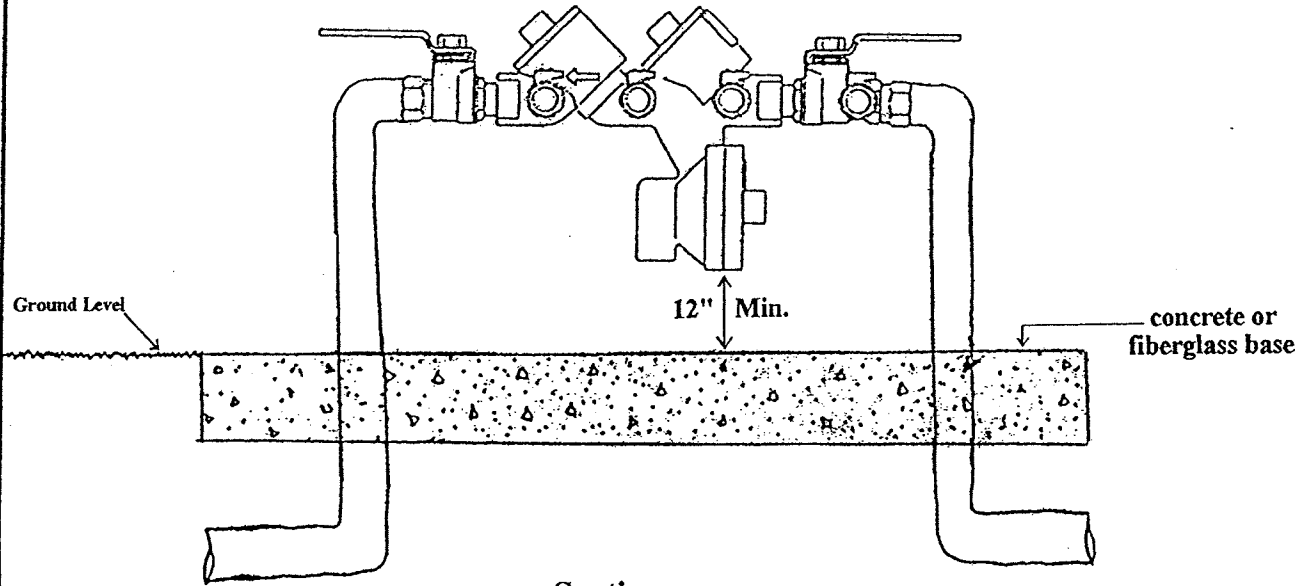
BF Products Inc.
3500-L Woodpark Blvd.
Charlotte, NC 28206
(704) 599-9407
(704) 599-0595 Fax
<http://www.bfproductsinc.com>

G & C Enclosures Inc.
60 Athens Drive
Mt. Juliet, TN 37122
(888) 753-6565
<http://www.gcenclosures.com>

Hot Box
250 Lane Avenue North
Jacksonville, FL 32254
(800) 736-0238
(904) 786-0204
(904) 783-6965 Fax

Safe T-Cover
2710 Landers Avenue
Nashville, TN 37211
(800) 245-6333
(615) 833-0233
(615) 831-0156 Fax
<http://www.safe-t-cover.com>

Note: Customer is responsible for above ground enclosure



Section
"No Scale"

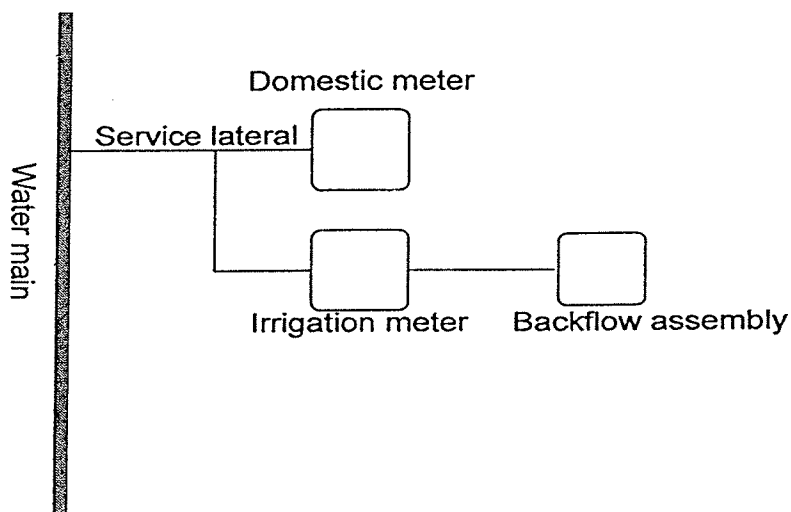
**Reduced Pressure Principle Assembly
Above Ground Installation**

Irrigation Services Method of Connection

An irrigation service lateral may be made by either a direct tap into the water main or by a split-tap off of the domestic service lateral-between the water main and the existing domestic meter (See fee schedule). Customers who wish to use the split-tap method should be aware that if their domestic service lateral is $\frac{3}{4}$ " , low water pressure to the residence could result from using their irrigation system. Hoke County Public Works will not be held responsible if low water pressure results from using the split-tap method.

Split-tap

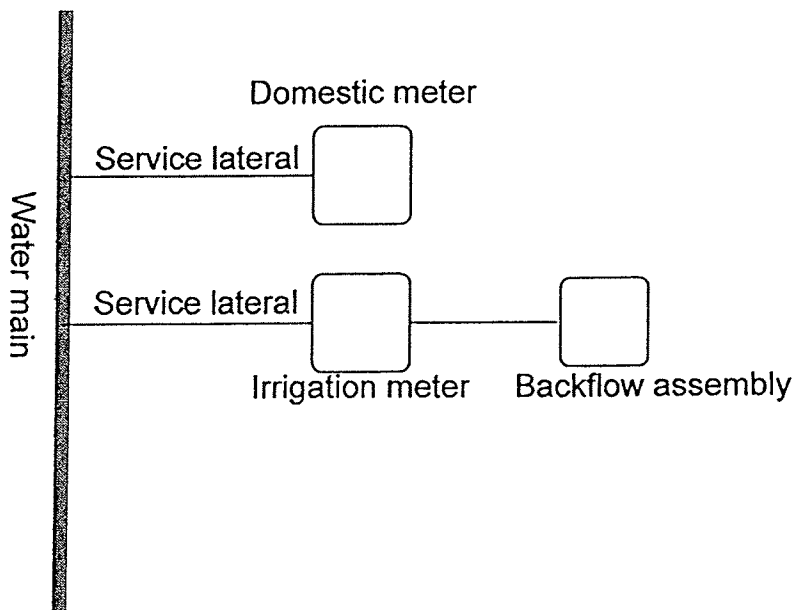
Address: _____



Signature for Split-tap _____

Direct tap

Address: _____



Signature for Direct tap _____